



Launchpad

Impact report

2023 - 24



Contents

Welcome from our CEO and Chair of Trustees	3
My name is Sam	4
About Launchpad	6
Our plan for the year	8
Drop-In visitor numbers climb	9
Who did we help in 2022/23?	10
My name is Tom	12
UK housing news	14
Finances	15
How you can make a difference	18
Volunteer for Launchpad	20
Will you leave a Launchpad legacy?	21
Thank you!	22

Cover photo: Siân at the University of Reading Community Festival.
Photo Credit: Rick Lay.



| Welcome to our 2023/24 Impact Report

Our year has been a story of growth, with demand for Launchpad's services increasing by 22% year on year.

We have seen significant growth in the numbers of people using Launchpad 135, our work and life skills centre - numbers are up an incredible 57%.

Sadly, for the second year in a row the numbers of people using our drop-in service has increased. Year on year numbers are up by a third. (You can read more about our drop-in team on page 9.)

The number of people that have used our Supported Housing service is out of step with the overall trend and have fallen by 11%. This drop in numbers was due to the lack of affordable rental properties in Reading - it was a challenge to move people on at the pace we wanted to.

Towards the end of the year, we took a vital step towards addressing this issue by purchasing two properties which will be able to home a further 11 people. These properties are 'move on' homes, which will be available to people who are ready to leave our Supported Housing and live more independently.

Right at the end of the year we took a very significant step, taking on two new homelessness projects for our long-term partner, Reading Borough Council. (You can read more about these new services, 'The Pods' & 'The Nova Project' on page 6.)

With these two new services, we are for the first time, providing housing support 24/7 for some of the people we work with. This is in step with our service and property strategies.

Whilst working hard to support growth in demand we have also continued to keep a very close eye on our costs, to ensure that everyone's donations are having the biggest impact possible.

Examples of this include re-negotiating leases on properties we rent on a long-term basis where possible and updating lighting to motion sensitive systems where appropriate to minimise our utility bills and to ensure we can do as much with our money as possible.

Thank you for your support!



Su Hamblyn
CEO



Sean Sutcliffe
Chair of Trustees



My name is Sam*

When I first went to Launchpad 135, I was quite broken. I was in my mid-30s and had just been diagnosed with Autism. I could no longer work as a social worker, something I'd done for many years and in several countries. After a lifetime of coping as an undiagnosed autistic person, I burnt out. I just couldn't do basic things for myself anymore. I wasn't really functioning at all.

Launchpad 135 was recommended to me by the Community Mental Health Team. My time at Launchpad 135 started slowly – initially I came once a week to take part in the Art Club. It didn't take me long to realise that this was a place where I could truly be myself without worrying about how I was acting (masking).

I could see straight away that the staff and volunteers here were positive and optimistic. There is no pressure to perform. The whole experience was far less invasive than everything I'd been dealing with for years.

Initially, I just came and painted and then I had a few meetings with Siân, one of the Launchpad 135 team. We set small, achievable goals. I was still very fragile, but I experienced a gentle re-awakening.

I continued to feel vulnerable for some time, but when I did have a difficult moment (I think it was during a work-themed event) I panicked. I started thinking about going back to work, to a place that

might make me ill again. The team saw what was happening and I was taken to one side and given a cup of tea in a quiet place. No-one else noticed, no fuss was made, everything was done subtly.

Why I needed help from Launchpad

It's important that I add some context here. I spent quite a lot of my childhood on my own, withdrawn from the kids in my school and neighbourhood. When I did mix with other kids, the challenges I had as an unrecognised autistic child (still many years away from being diagnosed at this point) made life difficult for me.

Despite these challenges, I made it to university which felt like a very welcome escape and after passing my degree, I decided that I wanted to be a social worker. When I started my training I kind of reinvented myself. I wanted to shake off how people at school had made me feel.

I did a lot of new things at this time – I travelled a lot and worked in three different countries. I was always seeking out new things to try – and always tried to say yes when I was asked if I wanted to do something. Looking back, I wanted to show people, and myself, that they were wrong, and I could do something great.

Things were fine for a while, but after a time I started to burn out from putting myself in situations that were stressful to me. Trying to fit in, and the

stress that caused, started to affect my health on a regular basis. In 2014 I was working in the UK, and I missed a full week of work for the first time, due to mental health issues.

I pushed on after this, but things got worse and in 2016 I crashed and was taking more time off work. I was talking to doctors about how I felt and was diagnosed with depression and anxiety, and put on medication. At work I started to need to have written instructions when asked to do anything and felt the need to repeatedly clarify what I'd been asked to do. I asked for help from my employers but didn't get what I needed.



I just ended up feeling that I had no voice, and I left my job later that year. I thought taking another job overseas would help, but this was a mistake – leaving my job in the UK marked the start of a major burnout.

At this point I was just about surviving. I came back to the UK and got a new job in Reading, but soon after that I stopped 'just about surviving' and properly crashed. My mental health was so bad, I just couldn't keep up with work. I knew that I couldn't continue with my career. This was very difficult for me; I'd been a social worker for years. By the time I was 30, I was burnt out.

I felt so bad that I couldn't do basic things for myself, I wasn't really functioning at all. Not being able to work quickly put my home at risk and despite having a very supportive landlord, I had to leave my flat. At first, I found it very difficult to access the benefits system – I was just overwhelmed. I ended up sofa surfing and relying on food banks. It was at this point that I first met

the Launchpad team. I went to a drop-in session and asked them for help with my situation. They helped me with a referral to Reading Borough Council's housing team which after some time resulted in me getting a flat – somewhere stable to live.

Whilst all this was happening, I was still being cared for by the Community Mental Health Team, but I struggled to get across how I was feeling. A lot of things just didn't seem to make sense.

My diagnosis

But then the autism diagnosis came, finally! And it made so much sense – it was a huge relief. Once I had a diagnosis, I was able to do so much research myself and it answered a lot of questions. Shortly after my diagnosis, one of the mental health team recommended I tried going to Launchpad 135 and that's how a new chapter began.

Back to Launchpad

After my first wobble at 135, (that I described above), I realised I was truly safe with the Launchpad team. This gave me the confidence to take part in an employer speed networking event, and I was able to talk about working again.

I started looking into different areas of work – I knew I couldn't go back into social work, or a full-time working environment. Whilst I continued to think about a career change, I also signed up as a lived experience volunteer at Launchpad 135. I was able to lead a life skills social event about the written word, poetry, and artwork. The group wrote a poem together, and I could see just how powerful the peer-to-peer support that goes on at 135 is.

Around this time, I was able to start working again, part time, drawing on what I'd experienced in my time as a volunteer. I'm so grateful for the Launchpad 135 team for giving me my life back.

**To protect privacy names have been changed and stock photos have been used.*

| About Launchpad

For 45 years, we have been Reading's leading homelessness prevention charity. We provide losing their home. It all started with a soup kitchen, founded by University of Reading

Preventing homelessness

Drop-In service

Our Drop-In service provides free information and support for people with a housing or homelessness problem. Absolutely anyone can visit our offices in central Reading on Monday, Wednesday and Friday from 10am to 2pm and speak to one of our advisors.

Launchpad works with Turpin & Miller, a law firm that provides crucial housing and homelessness-related legal advice, and helps people navigate complicated legal proceedings. If necessary Turpin & Miller will take legal action on behalf of people who are at risk of losing their home or who don't have a place to live.

Floating support

Our Floating Support team work with single parents, families, couples and individuals who are at risk of homelessness. The team offer support for up to six months. During this time they work to address the root of a housing problem – such as debt, mental health or addiction - and help people remain in their home or find suitable accommodation.

Offering this type of support is vital, and we have helped many clients avoid unlawful evictions and remain in their home, or obtain clean, safe and stable accommodation when it's needed the most.

Providing homes

Our Supported Housing service provides homes for over 100 people who are homeless and we have affordable long-term homes for individuals, couples and families in housing need.

Our temporary homes provide a stable place to live for periods of six to 24 months, while clients work with their dedicated support worker, to break the cycle of homelessness and tackle the issues that are holding people back.

From April 1st 2024, Launchpad also started to manage two Reading Borough Council homelessness projects, providing 24 hour bespoke support, for those with a rough sleeping history, at The Caversham Road Pods and The Nova Project.

The Nova Project

The Nova project is a specialist service for women, established in 2021 by Reading Borough Council, in response to an identified need. It provides a home for 10 multiply disadvantaged women in a gender and trauma-informed supported environment.

The home is a safe space for female residents to help them begin to recover from the experience of homelessness and to help them rebuild their lives until they are ready to move on.

As women experience homelessness differently from men - affected by violence, abuse and sexual harassment – there is a need for specialised, individual, gender-informed support to work through severe traumas such as domestic abuse which Launchpad staff will provide alongside partner agencies.

vital information and support for individuals, couples and families who are homeless or at risk of students back in 1979. Since then, we've grown Launchpad into a complete homelessness service.

The Pods

The Pods are self-contained modular homes in Reading established in 2021, providing wrap around support for 40 people who have been found sleeping rough and have multiple needs.

Clients can be housed for 2-3 years in this temporary accommodation to give them the opportunity to rebuild their lives through longer-term housing stability, paired with the essential support they need to take the next step to break the cycle of rough sleeping.

At both projects, Launchpad support staff are on site 24/7. We will work with new and existing clients to settle them into their new accommodation and will then work intensively with them, providing client-led holistic wraparound support, in partnership with other relevant agencies.

Rebuilding lives

Launchpad 135

Launchpad 135 is Reading's first work and life skills centre, a place where vulnerable people can learn new skills, build confidence and get back into work. This is where we rebuild lives.

We provide work-readiness skills, digital skills, DIY and cookery skills. The centre also serves as a hub, used by other charities and partner organisations as a safe space to meet clients who may be affected by homeless issues.

Launchpad 135 is just a ten minute walk from Reading town centre.

Our vision

We want everyone in Reading to have their own home, and the opportunity for a positive future.

Our mission

Our mission is to house, support and empower vulnerable people to transform their lives and fulfil their potential.

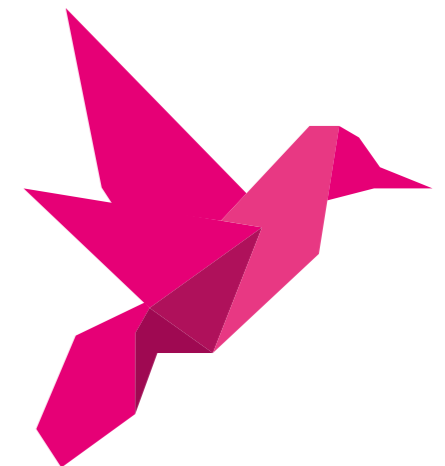
Our values

RESPECT - We respect the unique worth of every individual

EMPOWER - Every individual has the opportunity to help others fulfil their potential

INTEGRITY - We are always open, consistent and accountable in all that we do

INFLUENCE - We use our skills and knowledge to encourage change and innovation



| Our plan for the year

We are committed to doing as much as possible for Reading residents, this is what we'll be focused on for the coming year:

Services

We are aiming to help more people across Reading to avoid homelessness and we want to help more people experiencing or facing homelessness and support them to find long-term solutions.

How?

- Developing our two new services providing a therapeutic environment for individuals to thrive and build their independence
- Reviewing and refreshing our practice with trauma and gender informed approaches
- Introducing a co-production strategy in Reading, map services, and promoting client engagement
- Securing additional funding for Launchpad 135 to ensure continuity of service as our 3-year funding ends in December 2024, and introducing an outreach offer to those with multiple needs

Property

We are aiming to increase our affordable housing stock, to increase our affordable property options, and the number of bed spaces we own, to house more families and singles across Reading.

How?

- Increasing the number of our lease partnerships to expand our affordable property across Reading
- Review our housing staff structure to ensure the service can continue to deliver high standards as our property portfolio increases, to meet regulatory compliance and ensure all staff are

professionally trained to align with responsible person standards

- Research and consideration of registering as a Provider of Social Housing

People

We are aiming to build on our resilience and expertise. We want to develop a culture that is continually learning; where our staff and volunteers, and the people we exist to serve, feel valued and empowered.

- Furthering our work on workplace culture, thereby improving inclusion, and belonging through working groups, soft skills lunch sessions and health and well-being initiatives
- Introduce career journeys and learning pathways for managers and staff so that individuals can thrive within the organisation

Marketing and fundraising

We are aiming to grow the number of Reading residents who are aware of Launchpad to encourage them to share, support, donate, volunteer and attend our events, and increase fundraising income in order to support growing demand for services.

- Improving donor stewardship and retention
- Maximising income and return on investment (ROI)
- Increasing third party/corporate support and maximising our presence at 3rd party events

| Drop-in visitor numbers climb

In two years visitors to our drop-in team have nearly doubled - and demand shows no sign of slowing down.



Two years ago, 620 people were helped by our drop-in team, this year that number has climbed to 1,141 people! Many factors have led to numbers spiking over the past two years, including the cost of living crisis and an increase in asylum seekers needing rehoming in the town.

(There's more detail of who we helped in on the next page.)

We're incredibly proud of the work our drop-in team does and the resilience that they show. No two days are ever the same and many people who visit us are very vulnerable.

This can include people who have been priced out of the housing market, or have lost a job and can't pay their mortgage, to families who have been told they have to leave their home in two months.

We also help victims of domestic violence that have left their homes with only what they can carry and asylum seekers who have received the right to stay in the UK, but been told will be losing their Home Office accommodation in seven days.

Our Drop-In Service is available to anyone in Reading who needs housing or homelessness-related advice.

How you can speak to the team:

Visit the office

You can find us at: The Stables, 1A Merchants Place, Reading, RG1 1DT. Our office is open Monday, Wednesday, Friday 10am to 2pm.

Call for advice

0118 929 1111, you can call us Monday to Friday 9am to 5pm

Email us

support@launchpadreading.org.uk

Can you volunteer for our drop-in team?

Volunteers are a vital part of our drop-in team - and we're always keen to meet people who are interested in joining us.

If you're compassionate, a good communicator and want to make a difference, we'd love to hear from you.

You can find out more at:

launchpadreading.org.uk/volunteer

Or scan the QR code



Who did we help in 2023/24?

Preventing homelessness

 **1,141** people were supported by our **drop-in services**

 **248** people were supported by our **floating support service**

 **13** people were supported with **resettlement support***

Providing homes


 **167** people were supported by our **supported housing and removals service**


Rebuilding lives

 **233** people were supported by **Launchpad 135** - our work and life skills centre

TOTAL - 1,802

Also:

6 Launchpad 135 clients have found voluntary placements 

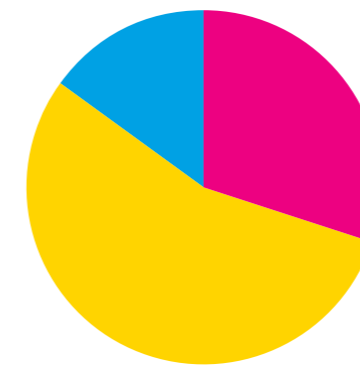
4 Launchpad 135 clients have found a job 

*Our resettlement support ensures people who have lived in our supported housing have the essential items and knowledge they need to manage their own homes, independent of Launchpad.

Who are our clients?

We pride ourselves on supporting anyone, regardless of their background or circumstances. The pie charts below give an overview of who we helped last year.

Gender



Female - 30%
Male - 55%
Not specified - 15%

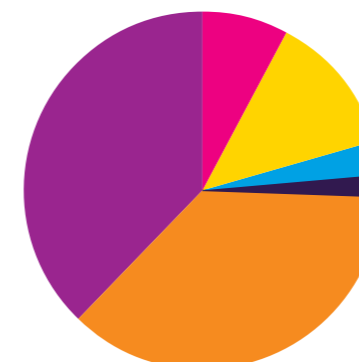
Age



18 to 24 - 9% 45 to 54 - 17%
25 to 34 - 24% 55 to 64 - 13%
35 to 44 - 23% 65 to 84 - 3%
Not specified - 12%

(The rounding of these numbers is why they add up to 99%)

Ethnicity



Asian - 8% Other - 2%
Black - 13% Not specified - 37%
Mixed - 3% White - 38%



My name is Tom*

Things really started to change for me, when I was introduced to Zoe from Launchpad. She's really helped me over the last seven months. She just gets me and knows how to get the best out of me.

I'm Tom, and I'm 29, I was born in Reading and have lived here all my life. Since school I never really felt that I fitted in – I guess that I've always been a bit of an outsider. As a result, I struggled at school and left mainstream education in year 10. Looking back, it's obvious to me now that I was very unhappy. I think even then I was struggling with my mental health.

Drugs and addiction

I started to dabble with drugs when I was still a teenager. Drugs are hard to avoid in Reading. For a while, I just smoked weed, looking back I think I was trying to self-medicate. I started to drink alcohol soon after this and before long MDMA and cocaine were in the mix too.

I started working at 17. My mental health was becoming more of an issue, but I was able to get a job. I enjoyed working and the money I made meant I could move out of home. I lived with my brother and for a while... things were more or less alright.

But having said that, I was still using drugs and alcohol as an escape. I felt that I didn't understand myself and it seemed that the drugs and booze helped me with this struggle. By the time I reached my mid-20s I was struggling to maintain relationships with people. I did have a girlfriend, but in 2019 we both lost our jobs and homes. I had to move back in with my parents.

This didn't last long. We argued – a lot – and I found myself homeless for the first time. Initially I was living out of a bag and sleeping on friends' sofas. That gets hard quickly. You have no privacy, nowhere to leave things. And it really didn't help my health. I had a few nights on the streets too, but because this happened when COVID hit, I was given emergency accommodation.

I was still taking drugs and drinking – drinking a lot at this time. But during the COVID lockdown, I was put on the council's Rent Guarantee Scheme¹. This meant, for a while, I had a roof over my head.

But then the landlord decided to sell his house and I just couldn't find anywhere else to live. I can't lie, this really set me back. One of the reasons I struggled so much to find anywhere was because

¹Reading Borough Council's Rent Guarantee Scheme matches people who need homes with landlords who have properties to let. The council pay the rent directly to the landlord, in advance. They also guarantee to pay up to six weeks' rent as a tenancy deposit, to cover costs if the property is damaged by tenants.

when landlords heard I was on benefits, they didn't want to take me on. Lots of landlords still see people on benefits as having a stigma.

This is how I ended up at Launchpad. Being a Reading lad, I'd heard of Launchpad and I knew that they might be able to help.

... I wasn't expecting Launchpad to offer me somewhere to live! But they did, they offered me a room in one of their houses. When I moved in, I was so chuffed – the people that I was sharing with were brilliant. Having good people around me is so important. Where I was before, I was surrounded by horrible people, I got burgled and there were drugs dealers everywhere. I did not want to be there – but I just didn't have any choice. Trust me – the temptation to make bad choices was there all the time.

Launchpad and the start of stability

For the first time in a while, with Launchpad, I had some stability. I was still making a lot of bad decisions, but I wasn't surrounded by bad people. Change doesn't happen overnight. And change for me was made harder by ketamine. Ketamine is an easy drug to get, but I know now that if you get addicted, it's hard to stop.

I've now been with Launchpad for two years, but for the first year I didn't make a lot of progress. I still found it hard to build relationships, I was still taking drugs and I wasn't taking responsibility for myself – I'd get behind on my rent and rather than deal with it I just avoided the issue.

And for the first year, if I'm honest, I didn't 'click' with the Launchpad team, but despite not making great progress, Launchpad didn't give up on me.

About five months ago I started to work with Zoe. And things have really started to improve. I guess I just feel she understands me more and we've built up a good relationship.

Zoe is a do-er and she gets straight to the point, and this has been good for me. Working with Zoe

has meant I've been able to unpick some of the issues I've been carrying around and I've started to grow as a person.

This started really slowly. At first, we set goals that I could reach quickly – such as starting to engage with people. Simple steps like that. Zoe quickly realised that if I felt overwhelmed that I would shut down, and just go back to the drink and drugs to avoid feeling bad about not doing what people were asking me to.

After we made some progress, I tried going to a drugs rehabilitation group, but being with a group was just too much. However, because Launchpad and 'Change Grow Live'² work so closely, Zoe was able to arrange for me to meet a counsellor at the Launchpad offices, somewhere I felt comfortable talking.

These may sound like small steps, but they weren't. They made a massive difference. My life became less chaotic, and I started to consistently take responsibility for myself. I think this type of flexibility that Launchpad offer is just so important.

Getting professional support has meant that I've been able to massively reduce my use of drugs. And because I'm not wasting so much of my money on drugs, I've been able to get to grips with my debt.

All these things have helped with my mental health too. Because of this I've been able to start to rebuild relationships – particularly with my mum and I'm so happy about this.

So today, I'm starting to feel ready to move on and to live independently and rely on myself. I can't tell you how fantastic that makes me feel and how grateful I am about the support I've had from Zoe and the whole Launchpad team.

²Change Grow Live (CGL) are nationwide drug rehabilitation charity who have a centre in Reading.

*To protect privacy names have been changed and stock photos have been used.

UK Housing News

The homelessness picture (February 2024)

Homelessness is on the rise in England

Latest statistics show that between April and June 2023, 47,530 single households were on a prevention or relief duty (which requires the Local Housing Authority – in our area this is Reading Borough Council – to take reasonable steps to help secure accommodation for any eligible person who is homeless).

This figure has risen by 3.9% from the same period in 2022. Between April and June 2023 in England, 34,850 households were assessed as being threatened with homelessness, this is up 1.5% from the same quarter last year.



This includes 6,640 households threatened with homelessness due to service of a Section 21 notice to end an Assured Shorthold Tenancy – an increase of 10.3% from the same quarter last year.

Government statistics shows tenants being issued with a Section 21 no fault eviction notice was the most common reason for being asked to move out. The long-awaited Renters Reform Bill, which would see a ban on no fault evictions in England, is now at committee stage going through Parliament.

Speaking to the BBC on Sunday February 11, Michael Gove, the housing secretary, guaranteed a ban on no fault evictions would be in place before the election.

He said: "There are a small minority of unscrupulous landlords who use the threat of eviction, either to jack up rents or to silence people who are complaining about the quality of their homes. It's important that we deal with that abuse."

Michael Gove pledged that by the election "we will have outlawed it and we will have put the money into the courts in order to ensure that they enforce that."

Cost of living relief

Along with the Renters Reform Bill, there is another glimmer of good news. Low-income households and those on means-tested benefits will receive a final £299 cost-of-living payment this month (February 2024) from the Department for Work and Pensions (DWP).

The payments will be sent out automatically – meaning those eligible do not need to apply. This payment is tax-free and will not have any impact on the benefit cap.

For some this help is still not enough to cover the high costs of utility bills. A new report from the Joseph Rowntree Foundation shows more than 14 million people in the UK fit the poverty definition. Please continue supporting Launchpad.

Our services remain sought after by so many and we want to help everyone in the Reading area who needs us.

Our Finances

Launchpad's finances are managed with a long-term perspective, enabling us to pursue our Mission - 'to house, support and empower vulnerable people to transform their lives and fulfil their potential'.

This year, we made a significant investment in two freehold residential properties, enhancing our general needs accommodation by adding eleven long-term affordable bed spaces. The acquisition was funded using resources drawn from our historical reserves, reflecting our commitment to sustainable growth and impact.

Continuing economic challenges

The economic challenges across the economy over the last two years have impacted on Launchpad in a number of ways:

- A significant increase in the number of people turning to Launchpad for support – many finding themselves vulnerable to the risk of homelessness for the first time;
- Increasing costs - particularly in respect of utilities and interest rates; and
- Decreasing fundraising income – as many of our supporters have had their own cost of living struggles.

Our core services (supported housing and floating support) are contracted by the local authority but are not fully funded* and we therefore rely on voluntary income (grants and fundraising) to be able to fully deliver our core services, as well as provide additional services such as legal support and our work & life-skills centre.

*Throughout the year, Launchpad secured a two-year extension to 2025 on the Core contract from Reading Borough Council.

The floating support contract income has remained unchanged for seven years, but income from the supported housing contract has now decreased by 7.3%. Meanwhile, costs continue to rise annually, highlighting the crucial need for your support and donations.

Fundraising income for 2023/24 increased by 16% to £446k, this increase can be attributed to an additional campaign aimed at supporting the costs of fitting out and furnishing our new properties.

While we are pleased to see year-over-year growth, we recognise that we have yet to reach our pre-COVID fundraising income levels of £500k and costs are still increasing.

"Like last year, the economic situation—and subsequent fewer donations—challenges non-profit organisations. Interestingly, public perceptions of the sector also concern non-profits significantly more than last year. Despite these challenges, more organisations are seeing income growth than decline, and those growing are more likely to have an evenly spread income stream portfolio."

Source: The Status of UK Fundraising 2024, Blackbaud

You will find a breakdown of our income and costs on the next two pages

Managing our finances

Income

Income has remained stable year on year and our performance has demonstrated the value of diverse income streams - a 16% increase in donations & grant income has mitigated the lack of benefit in kind donations for 2024.

Year ending March 2024

Total income: £3,643,316



- 12% Donations, fundraising events and grants
- 8% Restricted income (grants and donations)
- 16% Support services (contracted monies)
- 59% Rental Income
- 5% Other income

Year ending March 2023

Total income: £3,671,638



- 10% Donations, fundraising events and grants
- 6% Donations in kind (a non-cash gift with a financial value, e.g. a house.)
- 7% Restricted income (grants and donations)
- 17% Support services (contracted monies)
- 56% Rental Income
- 4% Other income

Expenditure

Costs have risen by 11%, whilst our spending ratios are largely unchanged. Higher property management expenses, growing demand for our services and investing in our staff have resulted in higher costs.

Year ending March 2024

Total expenditure: £3,514,700



- 51% Staff costs
- 42% Property costs
- 4% Activities
- 3% Governance, FR, admin & other

Year ending March 2023

Total expenditure: £3,167,135



- 50% Staff costs
- 44% Property costs
- 4% Activities
- 2% Governance, FR, admin & other

How you can make a difference

There are so many ways that you, your family, friends, co-workers, fellow runners, or choir members can get involved and help us enable our clients to get back on their feet.

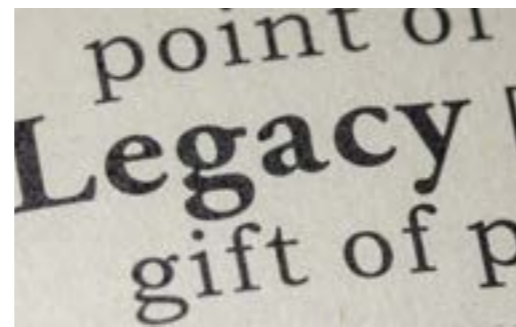
How about setting up a **regular donation** on our website? It's quick and simple to do and the amount you give is up to you – it could be the cost of your morning cup of coffee each month. Alternatively, you can also make a one-off donation.

launchpadreading.org.uk/donate



We hope that your Will is not needed for many years, but please consider **leaving a lasting legacy to Launchpad** to enable us to continue our vital work long into the future. Read more about legacy gifts on page 21.

launchpadreading.org.uk/legacy



Encourage the company you work for or the community organisation you're a part of to select us as their **'Charity of the Year'**, or perhaps you could host your own workday fundraiser? Alternatively, you could take part in one of our events, or spend a day team building at our allotment.

launchpadreading.org.uk/corporate-partner



Metro Bank at our Pancake race.
Photo Credit: Simon Kemp.

The **possibilities for fundraising are limitless**: run a marathon, hula hoop 2km, dye your beard pink, take a bath in a tub of beans, hold a bake sale, climb a mountain, or jump out of a plane – the sky really is the limit!

launchpadreading.org.uk/fundraising



If you'd rather not organise your own fundraiser, you're more than welcome to join in at one of Launchpad's flagship events.

Your Big Sleep Out – gather your family, colleagues, pupils or friends and organise your very own Big Sleep Out. We will help with all of your planning, you just need to provide the date, time and place to sleep – don't forget your sleeping bag!

launchpadreading.org.uk/yourbso



Lesley & son at their Big Sleep Out
Photo Credit: Lesley Chambers

Launchpad's Pancake Race takes place annually on Reading's Broad St - it's a brilliant, fun event for companies and community groups. It's held in front of a large crowd on pancake day - where else could you see a fruit salad, the Scooby Doo characters and inflatable Hulks flipping pancakes in relay?!

launchpadreading.org.uk/pancakerace



Pancake racers
Photo Credit: Simon Kemp.

Carols by Candlelight – a staple of the festive season, our Carols event is great for all the family. We'll help you get into the festive spirit by entertaining you with wonderful choirs and uplifting stories about how our work has helped local people.

launchpadreading.org.uk/donate



English Martyrs Primary School Choir
Photo Credit: Simon Kemp.

Walkies! is our newest fundraiser - a sponsored walk with your favourite canine. We're looking for dynamic duos to set themselves the goal of walking 100 miles in the 31 days of October. Every doggy participant gets an exclusive Launchpad bandana.

launchpadreading.org.uk/walkies



| Volunteer for Launchpad

We have a fantastic team of over 70 dedicated and talented volunteers – ranging from 19-70 years old, all with different skills and experience.



A young supporter at Reading Children's Festival.
Photo Credit: Alyson Chorley.

We simply couldn't run our services without them. They work across all areas of the organisation in all sorts of roles and are an extension of our staff team.

Last year volunteers gave 4,636 hours, this is equivalent to more than two full-time staff for the year or a donation of over £64,044!

Their work makes a huge difference to the way we work and the number of people we can support.

Our volunteers work in both client-facing and back office roles – they provide counselling, support people at our drop-in service, run activities at Launchpad 135, help out at fundraising events, give community talks and help with office-based administration.

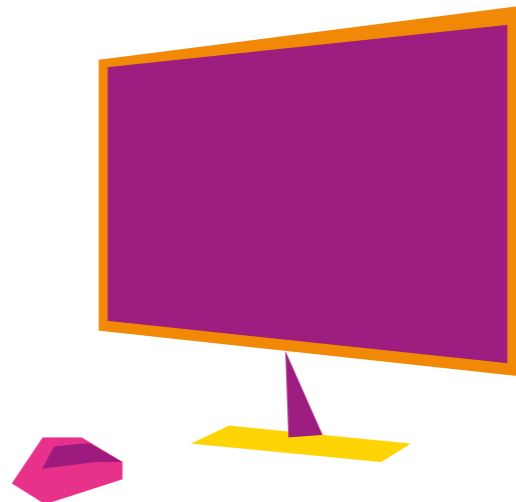
Our regular volunteers work with us for a few hours or even days a week, and other volunteers support us on a more ad-hoc basis at fundraising events such as the Big Sleep Out and the Pancake Race.

If you'd like more information about volunteering, please email the team:
volunteering@launchpadreading.org.uk

Sign up to our monthly E-newsletter

To stay up to date with all the Launchpad news, including volunteering opportunities, please sign up to our monthly E-newsletter, by completing the form on the homepage of our website:

launchpadreading.org.uk



| Will you leave a Launchpad Legacy?

Launchpad has been delivering change in Reading since 1979, and with your support, we can ensure we're still here in another 40 years, helping people who are homeless or at risk of losing their home.

If you can leave Launchpad a gift in your Will, it could help us to:

- Purchase more property so we can help more people across Reading who are homeless
- Support more people back into work, education or training
- Invest in affordable move-on accommodation to allow people to stay local once they're ready to move on from Launchpad

Your legacy, no matter the size, can help to change the lives of some of Reading's most vulnerable residents.

How to leave a gift to Launchpad in your Will

You can leave a gift to Launchpad by writing a new Will or updating an existing one. Please speak to a solicitor for further guidance about how to do this.

In the next column is an example of what you could add to your Will.

"I leave an X% share of my residuary estate for Launchpad Reading, absolutely for its general charitable purposes and I declare that the receipt of the treasurer or other proper officer for the time being shall be a sufficient discharge to my executors."

Your solicitor will recommend any appropriate changes.

Please ensure you include the following details:

Charity name: Launchpad
Registered charity number: 279859
Registered address: The Stables, 1A Merchants Place, Reading, RG1 1DT

If you'd like more information about leaving a legacy gift to Launchpad, please email the team at fundraising@launchpadreading.org.uk or call us on **0118 950 7656**.

The power of legacy gifts

UK residents give an incredible amount to charities in their Wills. Donations are worth around £3bn to charities each year! In 2020 112,000 people left a donation to a charity in their Wills.



Thank you!

We couldn't do what we do without your incredible, and very appreciated, support! We don't have the space to thank each and every person and organisation who has helped us in the past year. However, we would like to say a heartfelt thank you to the following very special people:

Our amazing staff and volunteers

Who continue to make Reading a better place day in, day out.

Our patrons

The Earl & Countess of Carnarvon, Matt Allwright, Danyl Johnson, Sir John Madejski, Professor Robert Van de Noort - for their passion and unending support.

Our fantastic trustees

Sean Sutcliffe - Chair, Hannah Powell - Vice-Chair, Ian Haslam - Vice-Chair, Suzanne Stallard, Matt Andrews, Phil Jones, Bill Montague, Helen Waring, Deborah Edwards, Dr Anna Ghelli, Alison Wright.

Who all give their time and support for free.



Carols by Candlelight at Reading Town Hall.
Photo Credit: Simon Kemp

Reading Borough Council

Our long-term statutory partner.

Our vital funders

Charitable Trusts & Foundations

The National Lottery: The Community Organisations Cost of Living Fund, Gerald Palmer Eling Trust, B&Q Foundation, Building Societies Trust Ltd, Brian Maguire Charitable Trust, National Lottery Community Fund, London Legal Support Trust, Berkshire Community Foundation, Beatrice Laing Trust, 29th May 1961 Charitable Trust, Sackler Trust, Henry Denman and Agneta Mary Cook Charity, Albert Hunt Trust, Earley Charity, Garfield Western Foundation, Syder Foundation, Maurits Mulder Canter Charity,

Hodge Foundation, Nationwide Community Grants, Haines Hill Charitable Trust.

Companies & organisations

Blue Collar Street Food, R Collard, Siren Craft Brew, Blake Morgan, Aldermore Dexter Montague & Partners, Castle Tap, Thames Water, Hewetts Law, Penningtons Manches, Fine & Country Henley-on-Thames, Neos Networks, Impax Asset Management, Johnson Matthey (Reading), Savills Reading, Race Solutions, Keysight Technologies, Microsoft, MST Events, Reading City FC, Egnyte, Wood PLC, Wade Macdonald, Oaktree Capital Management LLP, Purple Patch Management, Natwest Bank, Mapletree, Deloitte LLP, AXA UK Ltd, Jem Car Group, Devant Ltd, Davy Consulting, Alexander James Interior Design, Job Centre Plus, Mondelez UK Ltd, The Traditional Yoga Association, Irwin Mitchell LLP, Clifton Ingram LLP, Vail Williams, Frasers Property, Connect Reading, Air IT, Elmbank Mortgage Services, ISG Ltd. Lichfields, Evoke Transport, Clearview Group (& Aqua Moving Services), Hickies, Haines Watts TA, Fisher (Holdings) Ltd, Revolution, WorldRoc Search, Veeno Wine Bar (now Vino Vita), Cratus Communications, Our Media Ltd, K J Smith Solicitors, Allied Arms, Precisely Software Ltd, Croftstone Management, RSSL Reading UK, CIC Davis, Tate, M&S Woodley, Atos, Reading Voluntary Action,

Reading University Student's Union, Double Barrelled Brewery, RSM UK Ltd, The Oracle, Broad Street Mall, Field Seymour Parkes, Buzz Gym, Phil Jones Associates, PwC, Pure Offices Ltd, Highbury Jeweller, Jacobs Jewellers, John Lewis, Fortress Operations, Nexus Planning.

And finally

Our local community of one-off donors and those who support us financially month in, month out, and everyone who has taken part in an event or who has fundraised for us. Including scouts and guides, community groups, and schools, artists and musicians.



Kirsti - our Head of Marketing & Fundraising with B-Radio at Reading Pride.



Art from Launchpad 135's 2024 art club exhibition

HOW TO GET IN TOUCH WITH THE TEAM

Launchpad Reading
The Stables
1A Merchants Place
Reading RG11DT

0118 950 7656
enquiries@launchpadreading.org.uk
launchpadreading.org.uk

Facebook @LaunchpadRdg
Twitter @Launchpad_RDG
Instagram @launchpadreading
LinkedIn @Launchpad Reading



Uncredited photos are either stock photos, or photos taken by the Launchpad team.

Launchpad is a registered charity (279859) and is a company limited by guarantee (1459149) in England and Wales.